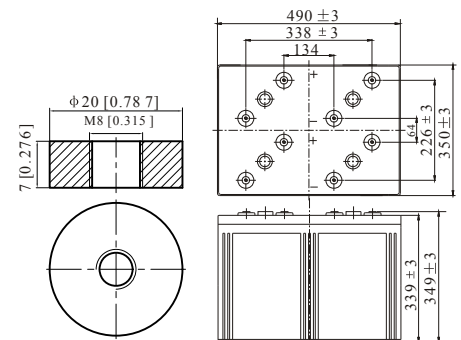


Specification

Nominal Voltage	2V	
Nominal Capacity(10hrs rate)	2500.0AH	
Dimension	Length	490 ± 3mm(19.29 inches)
	Width	350 ± 3mm(13.78 inches)
	Container Height	339 ± 3mm(13.35 inches)
	Total Height (with Terminal)	349 ± 3mm(13.74 inches)
	Approx Weight	Approx 143.0Kg (315.3lbs)
Design Float Life	20 years at 25°C(77°F)	
Container Material	ABS	
Rated Capacity	2675.0AH/133.8A	(20hr, 1.80V/cell, 25°C/77°F)
	2500.0AH/250.0A	(10hr, 1.80V/cell, 25°C/77°F)
	2175.0AH/435.0A	(5hr, 1.75V/cell, 25°C/77°F)
	1950.0AH/650.0A	(3hr, 1.75V/cell, 25°C/77°F)
	1550.0AH/1550.0A	(1hr, 1.60V/cell, 25°C/77°F)
Max. Discharge Current	20000A (5s)	
Internal Resistance	Approx 0.25mΩ	
Operating Temp. Range	Discharge :	-15~50°C (5~120°F)
	Charge :	0~40°C (5~104°F)
	Storage :	-15~40°C (5~104°F)
Nominal Operating Temp. Range	25 ± 3°C (77 ± 5°F)	
Cycle Use	Initial Charging Current less than 750.0A.Voltage	
	2.4V~2.5V at 25°C(77°F)Temp. Coefficient -5mV/°C	
Standby Use	No limit on Initial Charging Current Voltage	
	2.25V~2.3V at 25°C(77°F)Temp. Coefficient -3mV/°C	
Capacity affected by Temperature	40°C (104°F)	103%
	25°C (77°F)	100%
	0°C (32°F)	86%
Self Discharge	≤1.5% per month	
	RUZET TPA series batteries may be stored for up to 6 months at 25°C(77°F) and then a freshening charge is required.	



Applications

- UPS and EPS
- Emergency light
- Railway signal and aircraft signal system
- Marine and power stations Alarm and security system
- Electronic apparatus and equipment
- Communication power supply, DC power supply

Constant Current Discharge (Amperes) at 25°C (77°F)

F.V/Time	10 min	15 min	20 min	30 min	45 min	1h	2h	3h	4h	5h	6h	8h	10h	20h
1.85V/cell	2925.0	2460.0	2182.5	1810.0	1396.7	1195.0	773.8	581.8	476.6	401.0	351.3	281.8	242.3	129.3
1.80V/cell	3346.9	2762.4	2413.0	1965.9	1506.7	1261.4	831.8	625.0	506.6	425.0	372.2	296.6	250.0	133.8
1.75V/cell	3801.4	3113.4	2666.7	2136.3	1643.3	1375.0	865.0	650.0	524.1	435.0	383.8	306.5	256.7	137.1
1.70V/cell	\	3454.2	2943.5	2332.3	1770.0	1455.0	911.3	684.2	547.5	460.0	402.3	319.4	266.6	140.6
1.65V/cell	\	3698.4	3131.4	2461.3	1873.3	1505.0	944.8	711.7	569.1	474.5	416.3	330.2	274.1	145.0
1.60V/cell	\	\	3401.8	2626.4	1946.7	1550.0	968.8	730.0	581.8	486.1	425.0	335.9	279.8	147.4

Constant Power Discharge (Watts) at 25°C (77°F)

F.V/Time	10 min	15 min	20 min	30 min	45 min	1h	2h	3h	4h	5h	6h	8h	10h	20h
1.85V/cell	5461.6	4639.6	4157.7	3486.1	2712.6	2328.9	1518.1	1145.6	941.4	794.1	697.6	562.1	484.3	258.6
1.80V/cell	6176.7	5140.6	4529.9	3728.9	2903.6	2445.3	1621.1	1223.9	995.3	837.8	736.2	589.7	499.0	267.2
1.75V/cell	6904.0	5723.4	4958.7	4019.0	3137.1	2653.5	1679.7	1267.9	1026.1	854.6	756.9	608.1	511.8	273.7
1.70V/cell	\	6262.5	5432.8	4363.8	3366.5	2799.0	1765.8	1332.1	1070.0	902.3	792.0	633.1	531.1	280.5
1.65V/cell	\	6654.1	5736.8	4567.7	3531.2	2874.6	1820.2	1379.7	1108.1	927.6	817.1	652.8	545.1	288.8
1.60V/cell	\	\	6165.0	4840.4	3650.0	2945.0	1857.5	1408.9	1129.2	946.9	831.7	662.8	555.6	293.1