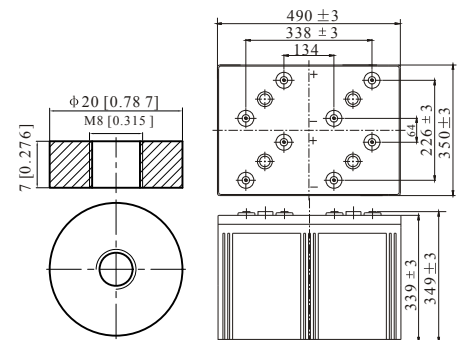


Specification

Nominal Voltage	2V		
Nominal Capacity(10hrs rate)	2500.0AH		
Dimension	Length	490 ± 3mm(19.29 inches)	
	Width	350 ± 3mm(13.78 inches)	
	Container Height	339 ± 3mm(13.35 inches)	
	Total Height (with Terminal)	349 ± 3mm(13.74 inches)	
	Approx Weight	Approx 143.0Kg (315.3lbs)	
Design Float Life	20 years at 25°C(77°F)		
Container Material	ABS		
Rated Capacity	2675.0AH/133.8A	(20hr, 1.80V/cell, 25°C/77°F)	
	2500.0AH/250.0A	(10hr, 1.80V/cell, 25°C/77°F)	
	2175.0AH/435.0A	(5hr, 1.75V/cell, 25°C/77°F)	
	1950.0AH/650.0A	(3hr, 1.75V/cell, 25°C/77°F)	
	1550.0AH/1550.0A	(1hr, 1.60V/cell, 25°C/77°F)	
Max. Discharge Current	20000A (5s)		
Internal Resistance	Approx 0.25mΩ		
Operating Temp. Range	Discharge :	-15~50°C (5~120°F)	
	Charge :	0~40°C (5~104°F)	
	Storage :	-15~40°C (5~104°F)	
Nominal Operating Temp. Range	25 ± 3°C (77 ± 5°F)		
Cycle Use	Initial Charging Current less than 750.0A.Voltage		
	2.4V~2.5V at 25°C(77°F)Temp. Coefficient -5mV/°C		
Standby Use	No limit on Initial Charging Current Voltage		
	2.25V~2.3V at 25°C(77°F)Temp. Coefficient -3mV/°C		
Capacity affected by Temperature	40°C (104°F)	103%	
	25°C (77°F)	100%	
	0°C (32°F)	86%	
Self Discharge	≤1.5% per month		
	RUZET TPG series batteries may be stored for up to 6 months at 25°C(77°F) and then a freshening charge is required.		



Applications

- UPS and EPS
- Emergency light
- Railway signal and aircraft signal system
- Marine and power stations Alarm and security system
- Electronic apparatus and equipment
- Communication power supply, DC power supply

Constant Current Discharge (Amperes) at 25°C (77°F)

F.V/Time	10 min	15 min	20 min	30 min	45 min	1h	2h	3h	4h	5h	6h	8h	10h	20h
1.85V/ce ll	2925.0	2460.0	2182.5	1810.0	1396.7	1195.0	773.8	581.8	476.6	401.0	351.3	281.8	242.3	129.3
1.80V/ce ll	3346.9	2762.4	2413.0	1965.9	1506.7	1261.4	831.8	625.0	506.6	425.0	372.2	296.6	250.0	133.8
1.75V/ce ll	3801.4	3113.4	2666.7	2136.3	1643.3	1375.0	865.0	650.0	524.1	435.0	383.8	306.5	256.7	137.1
1.70V/ce ll	\	3454.2	2943.5	2332.3	1770.0	1455.0	911.3	684.2	547.5	460.0	402.3	319.4	266.6	140.6
1.65V/ce ll	\	3698.4	3131.4	2461.3	1873.3	1505.0	944.8	711.7	569.1	474.5	416.3	330.2	274.1	145.0
1.60V/ce ll	\	\	3401.8	2626.4	1946.7	1550.0	968.8	730.0	581.8	486.1	425.0	335.9	279.8	147.4

Constant Power Discharge (Watts) at 25°C (77°F)

F.V/Time	10 min	15 min	20 min	30 min	45 min	1h	2h	3h	4h	5h	6h	8h	10h	20h
1.85V/ce ll	5201.52	4418.67	3959.71	3320.10	2583.43	2218.00	1445.81	1091.05	896.57	756.29	664.38	535.33	461.24	246.29
1.80V/ce ll	5882.57	4895.81	4314.19	3551.33	2765.33	2328.86	1543.90	1165.62	947.90	797.90	701.14	561.62	475.24	254.48
1.75V/ce ll	6575.24	5450.86	4722.57	3827.62	2987.71	2527.14	1599.71	1207.52	977.24	813.90	720.86	579.14	487.43	260.67
1.70V/ce ll	\	5964.29	5174.10	4156.00	3206.19	2665.71	1681.71	1268.67	1019.05	859.33	754.29	602.95	505.81	267.14
1.65V/ce ll	\	6337.24	5463.62	4350.19	3363.05	2737.71	1733.52	1314.00	1055.33	883.43	778.19	621.71	519.14	275.05
1.60V/ce ll	\	\	5871.43	4609.90	3476.19	2804.76	1769.05	1341.81	1075.43	901.81	792.10	631.24	246.29	279.14