

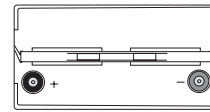
## Specification

- Nominal Voltage: 12-Volt
- Design Float Life: 10 years @25°C (77°F)
- Positive Plate: Pure lead, low-calcium, high-tin alloy
- Negative Plate: Lead calcium alloy
- Container: US94 V0 =ABS
- Post Seal: Epoxy-sealed
- Case-to-cover Seal: Heat-sealed
- Vents: Miruc™ self-sealed vents
- Recommended Float Voltage: 2.27 volts/cell@25°C (77°F)
- Float Voltage Range: 2.25-2.30 volts/cell
- Temperature Coefficient: -3mV/°C per cell
- Equalize Voltage: 2.30-2.35 volts/cell
- Initial Charging Current: ≤30%C<sub>10</sub>
- Gas Recombination efficiency: ≥99.7%
- Self-discharging rate: ≤2% per month

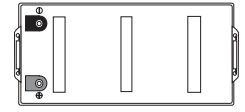
Top-view:  
12HR60/80/130  
12HR220/400/510



Top-view:  
12HR240/340

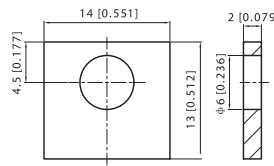


Top-view:  
12HR670/820

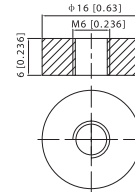


### Terminal Style:

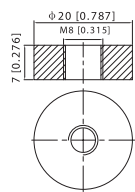
Unit: mm [inches]



Unit: mm [inches]



Unit: mm [inches]



HIGH RATE Series Data Sheet-Discharging Ratings in Watts Per Cell @ 25°C (77°F)

Battery Type	Volts /cell	Discharge Time--Minutes						Discharge Time--Hours							
		5	10	15	20	30	45	1	2	3	4	5	6	8	10
12HR60	1.75	94.2	72.2	55.3	47.6	36.2	27.4	22.2	12.7	9.52	7.51	6.23	5.43	4.42	3.75
	1.70	100.9	76.9	58.2	49.7	37.5	28.4	22.8	13.2	9.77	7.69	6.37	5.53	4.48	3.78
	1.67	109.7	82.3	60.4	52.4	39.2	28.8	23.4	13.5	10.1	7.93	6.42	5.64	4.54	3.86
12HR80	1.75	125.6	96.3	73.7	63.5	48.2	36.5	29.6	17.0	12.7	10.0	8.31	7.24	5.89	5.00
	1.70	134.5	102.6	77.6	66.2	49.9	37.8	30.5	17.6	13.0	10.3	8.49	7.38	5.97	5.05
	1.67	146.2	109.7	80.4	69.8	52.2	38.4	31.3	18.0	13.5	10.6	8.55	7.52	6.05	5.14
12HR130	1.75	195.2	141.6	113.8	97.0	70.2	53.5	43.2	26.3	19.8	15.8	13.2	11.4	9.33	7.71
	1.70	208.9	150.9	119.8	101.2	72.6	55.4	44.4	27.3	20.3	16.2	13.5	11.6	9.45	7.78
	1.67	227.1	161.3	130.4	106.7	76.0	56.3	45.6	27.9	21.1	16.7	13.8	11.9	9.57	7.93
12HR220	1.75	333.8	242.3	194.7	165.9	120.0	91.5	73.9	45.1	33.9	27.1	22.5	19.5	16.0	13.2
	1.70	357.4	258.1	205.0	173.0	124.2	94.8	76.0	46.7	34.8	27.7	23.0	19.9	16.2	13.3
	1.67	388.5	276.0	220.3	182.4	130.0	96.2	77.9	47.8	36.1	28.6	23.6	20.3	16.4	13.6
12HR240	1.75	369.8	268.4	215.7	183.7	133.0	101.3	81.8	49.9	37.5	30.0	24.9	21.6	17.7	14.6
	1.70	395.9	285.9	227.0	191.7	137.6	105.0	84.1	51.8	38.5	30.7	25.5	22.1	17.9	14.7
	1.67	430.4	305.7	240.6	202.1	144.0	106.6	86.3	52.9	40.0	31.7	26.1	22.5	18.1	15.0
12HR340	1.75	513.6	272.7	299.5	255.2	184.7	140.7	113.7	69.3	52.1	41.7	34.6	30.1	24.5	20.3
	1.70	549.8	397.1	315.3	266.2	191.1	145.8	116.8	71.9	53.5	42.7	35.4	30.6	24.9	20.5
	1.67	597.7	424.6	340.2	280.7	200.0	148.1	119.9	73.5	55.5	44.0	36.3	31.2	25.2	20.9
12HR400	1.75	616.3	447.3	359.4	306.2	221.6	168.9	136.4	83.2	62.6	50.0	41.5	36.1	29.5	24.3
	1.70	659.8	476.5	378.4	319.4	229.4	174.9	140.2	86.3	64.2	51.2	42.5	36.8	29.8	24.6
	1.67	717.3	509.5	400.0	336.8	240.0	177.7	143.9	88.2	66.6	52.8	43.6	37.5	30.2	25.0
12HR510	1.75	770.3	559.1	449.3	383.8	277.0	211.1	170.5	104.0	78.2	62.5	51.9	45.1	36.8	30.4
	1.70	824.8	595.6	473.0	399.3	286.7	218.7	175.3	107.9	80.2	64.0	53.1	46.0	37.3	30.7
	1.67	882.2	636.9	510.3	421.0	300.0	222.1	179.9	110.2	83.3	66.0	54.4	46.8	37.8	31.3
12HR670	1.75	1086	745.5	599.1	510.4	369.3	281.4	227.3	138.6	104.3	83.3	69.2	60.1	49.1	40.6
	1.70	1154	794.1	630.7	532.4	382.3	291.6	233.7	143.8	106.9	85.4	70.9	61.3	49.7	40.9
	1.67	1238	849.2	670.6	561.4	399.9	296.1	239.8	147.0	111.1	88.0	72.6	62.4	50.4	41.7
12HR820	1.75	1232.6	894.6	718.8	612.4	443.2	337.8	272.8	166.4	125.2	100.0	83.0	72.2	59.0	48.6
	1.70	1319.6	953.0	756.8	638.8	458.8	349.8	280.4	172.6	128.4	102.4	85.0	73.6	59.6	49.2
	1.67	1434.6	1019.0	800.0	673.6	480.0	355.4	287.8	176.4	133.2	105.6	87.2	75.0	60.4	50.0